

# Micronesian Challenge Scientific Measures

Update from the 2<sup>nd</sup> Measures Working Group Meetings

Koror, Palau

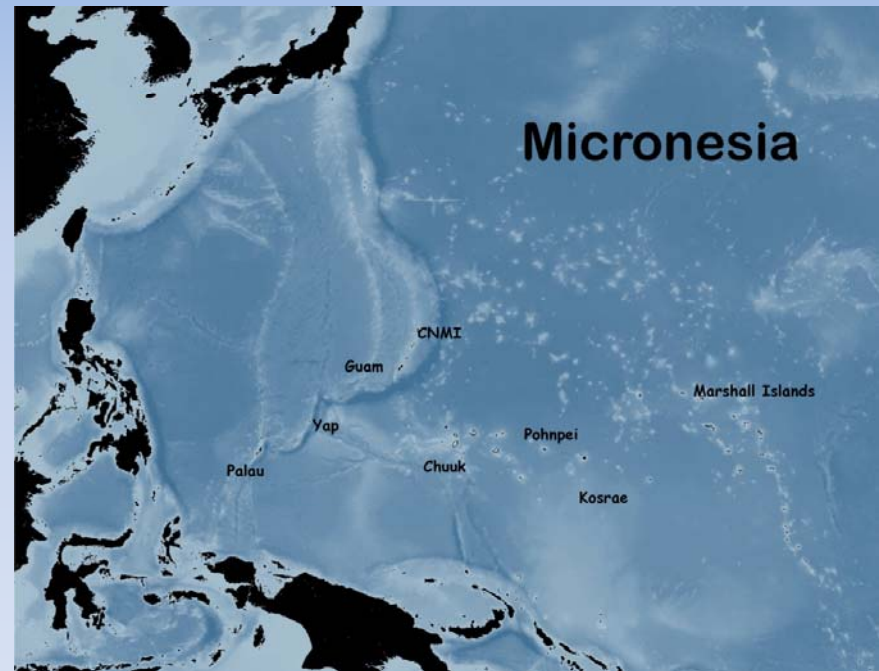


Dr. Peter Houk  
Marine Biologist  
PMRI  
[www.pacmares.com](http://www.pacmares.com)



# Goals

- Work with regional scientists and managers to agree upon a set of standardized measures to assess effectiveness of the challenge



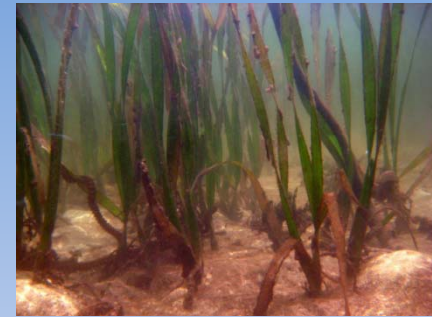
# Participants

- CNMI
- Guam
- Palau
- FSM
- RMI
- Local Governmental agencies
- Non-profit organizations
- Regional scientific experts
  - JICA, TNC, SPREP, NOAA
- Community monitoring leaders



# Marine Group Major Findings

- MC translates to area-based management for majority of jurisdictions
- Primary examples are MPA's and/or watershed-reef system
- Examine change over time





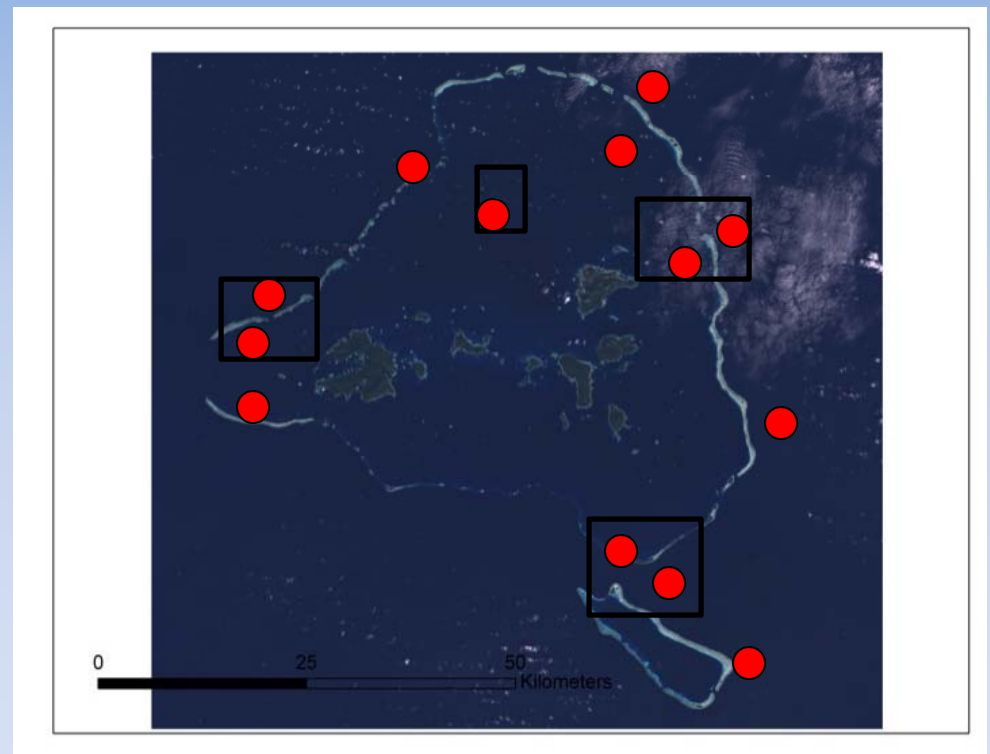
# Methods

- Tier 1 – Transect based data collection by trained individuals.
- Tier 2 – Social perception of the resource.



# Tier 1 – Focus of meeting

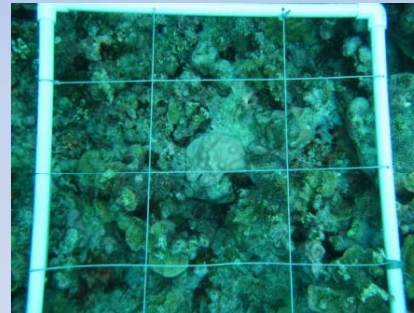
- Site-based monitoring
  - Station = 5 x 50m transects
  - Stations established inside and outside of each MPA, in each major habitat
  - Data collection desired annually (bi-annual more realistic?)



Hypothetical MPA structure on Chuuk

# At each station (5 x 50m transect)

- Replicated benthic photo quadrats (1m)
- Coral recruits (0.5x10m)
- Coral colony size classes
- Fish abundances (belts, maybe timed swims)
- Macroinvertebrate abundances (belts)

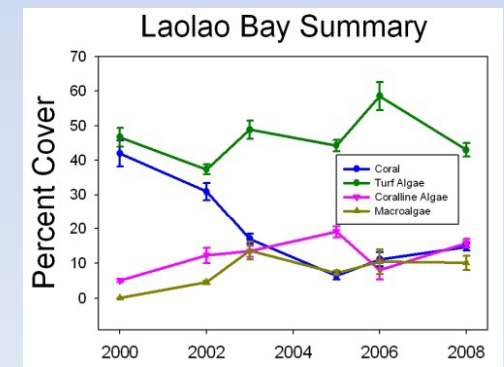
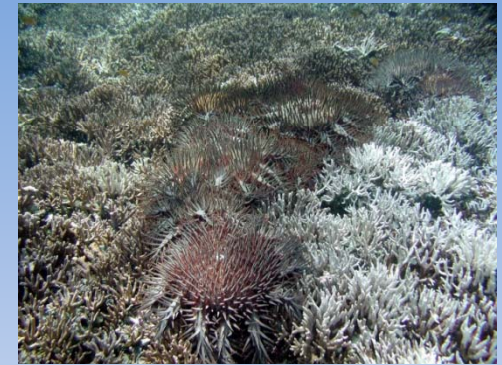


*Many desirable indicators discussed were left out due to logistics (i.e., water quality)*



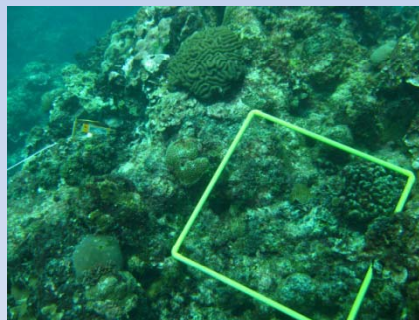
# Results facilitate understanding

- Resource status
- MC-mediated improvements
- Climate induced impacts
- Natural disturbances
- Resiliency, while taking into account natural disturbances



# Needs

- Group conducted a capacity assessment for monitoring needs
  - Each existing jurisdiction would need 1-2 additional monitoring staff
  - Database needs final stages of agreement and testing
  - Regional node(s) for maintaining database and analyses for report out



# Next Steps

- Field testing of tier 1 protocols
- Complete database design
- Continue delineating MC-management sites throughout the region
- Finalize protocols



# Tier 2 monitoring ties in with socioeconomic group

- Six indicators
  - Behavior change
  - Enforcement/compliance
  - Perception of resource
  - Support for MC
  - Participation in MC
  - Livelihood impacts
- Drafting protocol for implementation of SE monitoring
- On thumb drive SE materials



# Thanks to all involved

- Report available from The Nature Conservancy, *Micronesia Program*
- Email to:
- Trina Leberer - Director
  - [tleberer@tnc.org](mailto:tleberer@tnc.org)



**MOVING TOWARD MEASURING OUR  
EFFECTIVENESS:  
THE 2<sup>ND</sup> MEETING OF THE MC  
MEASURES WORKING GROUP AND  
PICRC-JICA CORAL REEF  
MONITORING PROJECT MEETING**

15-19 February, 2010  
Palasia Hotel, Koror  
Republic of Palau

